



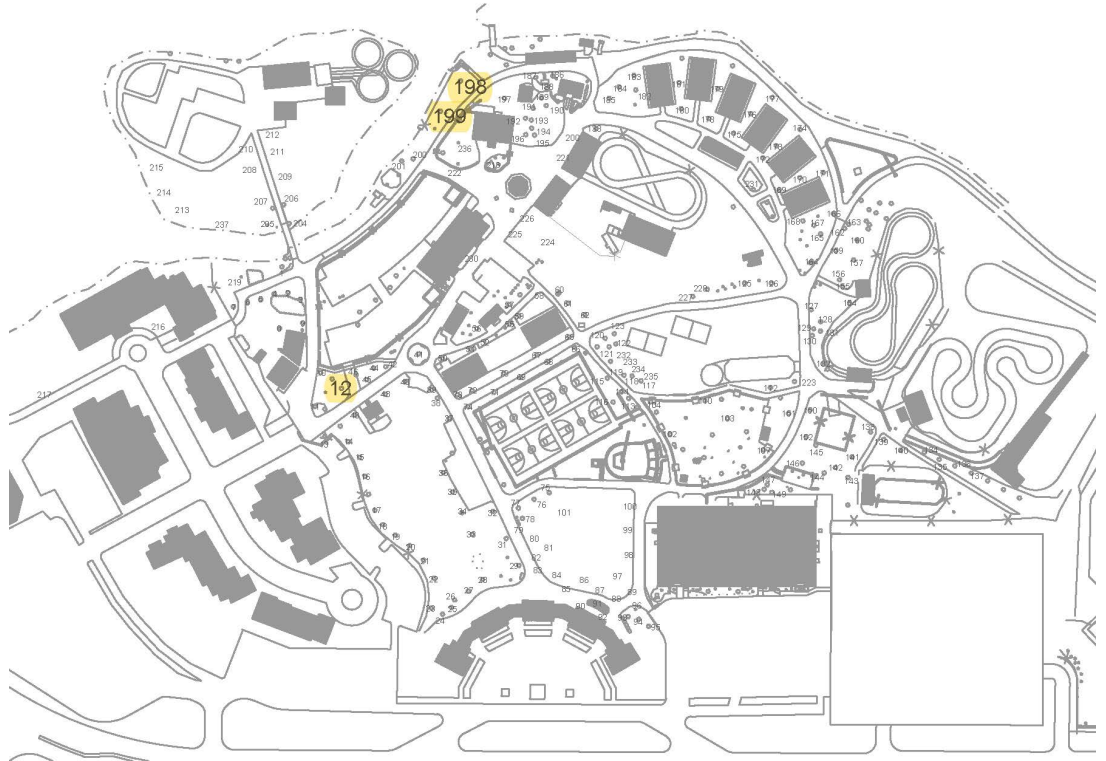
Betula nigra River Birch

BOTANICAL NAME
PRONUNCIATION
COMMON NAME
TYPICAL HEIGHT
TYPICAL SPREAD
NATIVE HABITAT
DESCRIPTION

Betula nigra
bet'ū-la nī'gra
River Birch
40-70'
40-60'
Massachusetts to Florida, west to Minnesota and Kansas
The River Birch is a deciduous, medium to large-sized native tree. The leaves are alternate, double serrated, wedged-shaped, and sharp-pointed. The bark on the trunk varies among individuals, ranging in color from silvery gray-brown to pinkish-brown when young, but always with darker, narrow, longitudinal lenticels. True to its name, the River Birch is well-suited to wet areas.

FAMILY
Betulaceae
GENUS
Betula
SPECIES
nigra

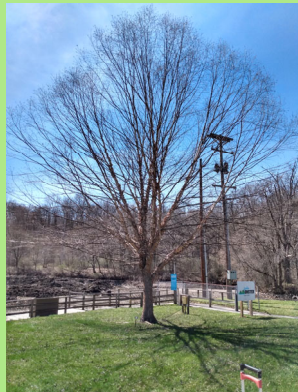
TREE LOCATIONS
12, 198, 199



Summer Photo



Winter Photo



Leaf Example



Bark Example

